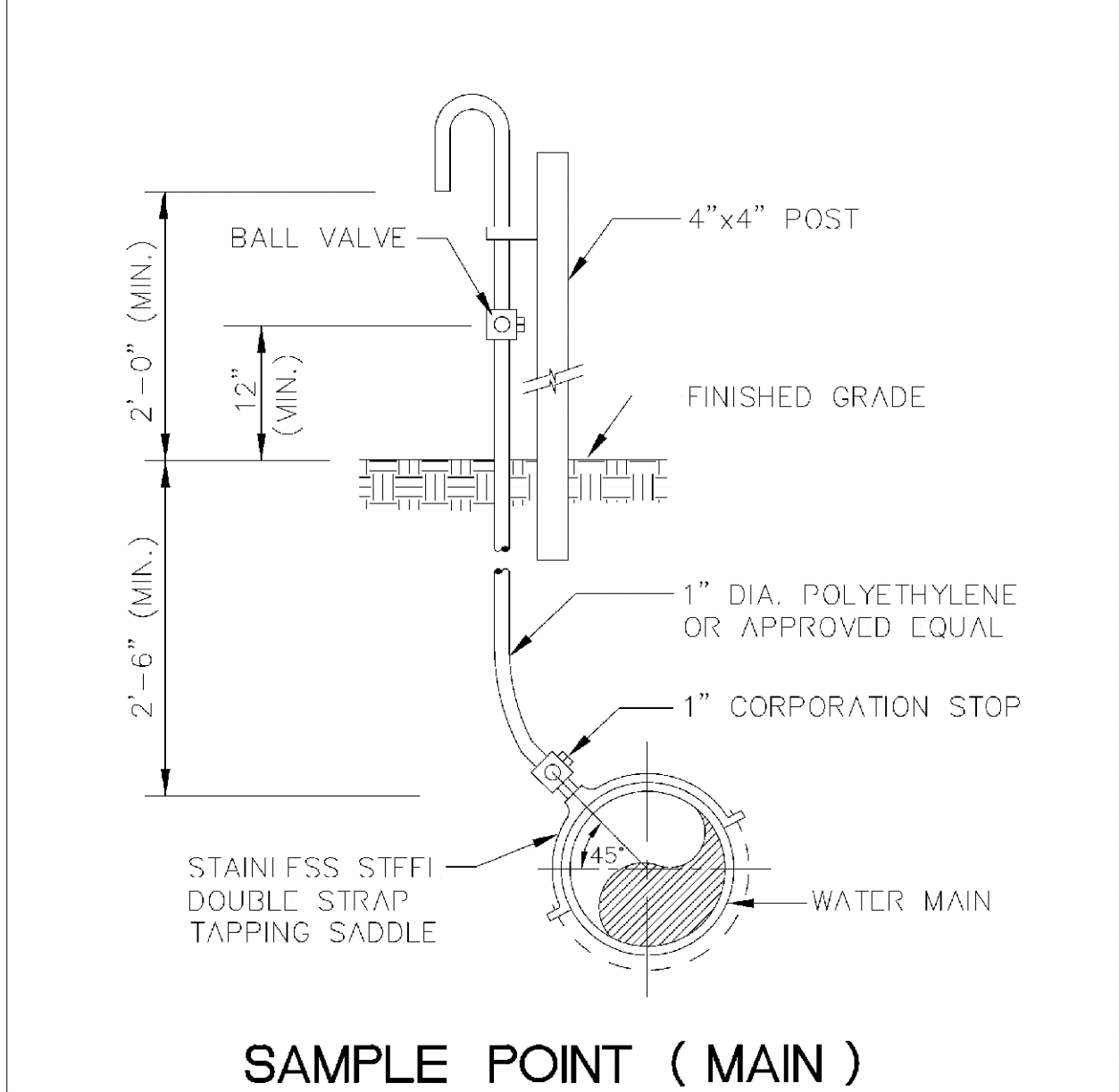
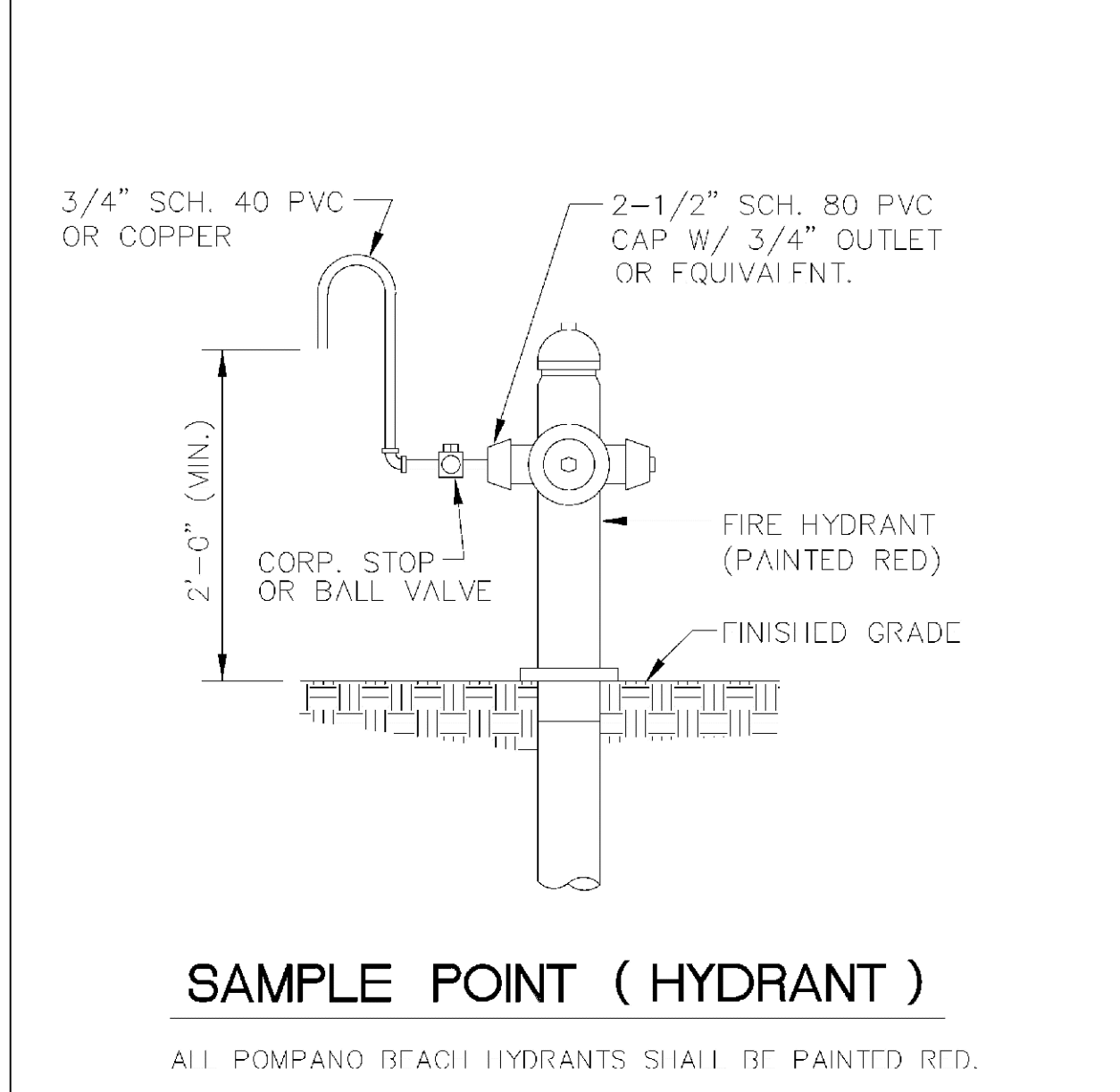


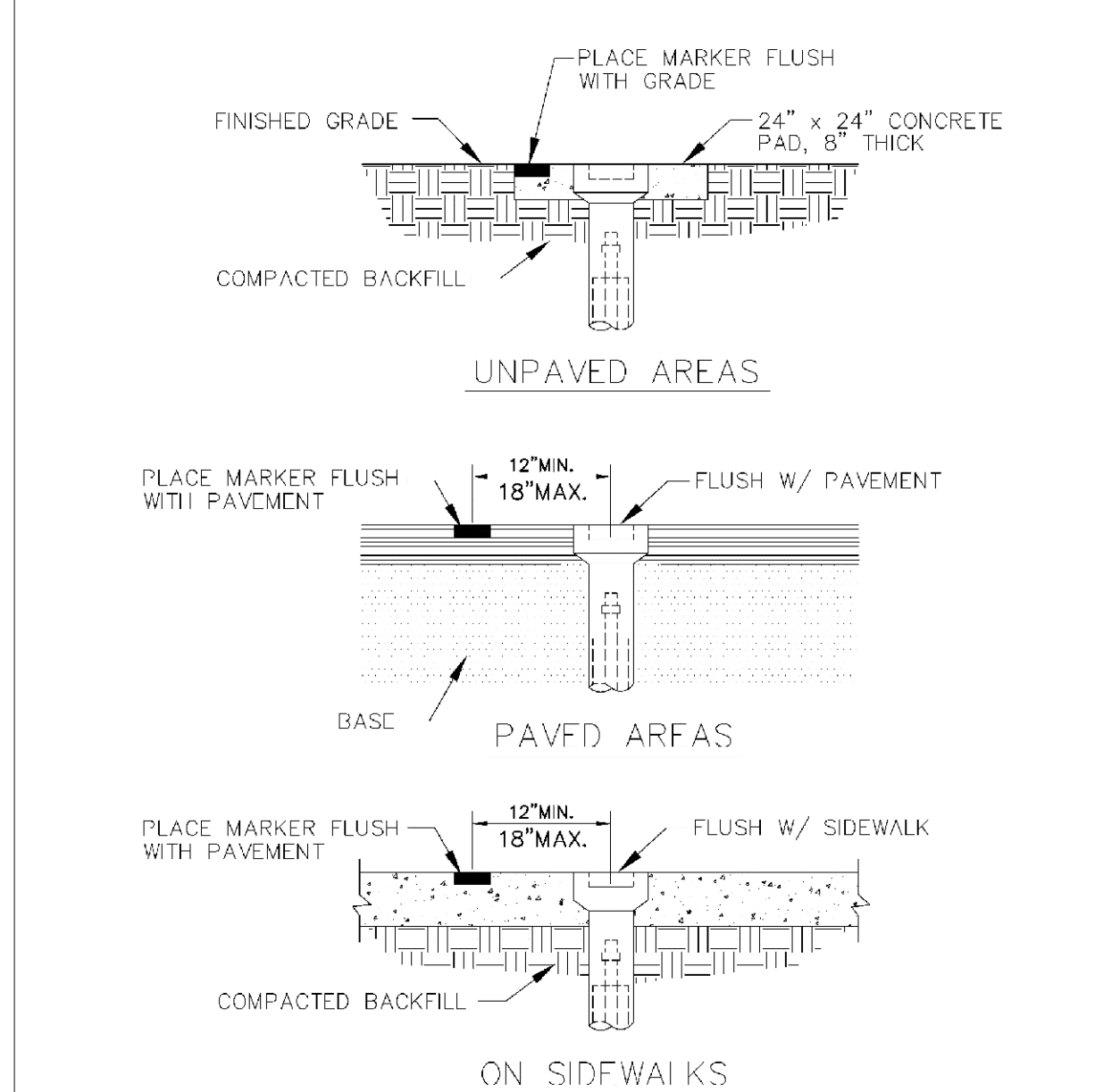
ENGINEERING STANDARDS 2022			
REVISIONS		ENGINEERING DIVISION CITY OF POMPAÑO BEACH	SHALLOW TYPE MANHOLE
BY	DATE		
S.S.	JUNE 2005		
T.W.	11-2007		
A.S.	09-2021		
SCALE: N.T.S.		DATE: JUNE 2022 DWG. NO. 216-1	



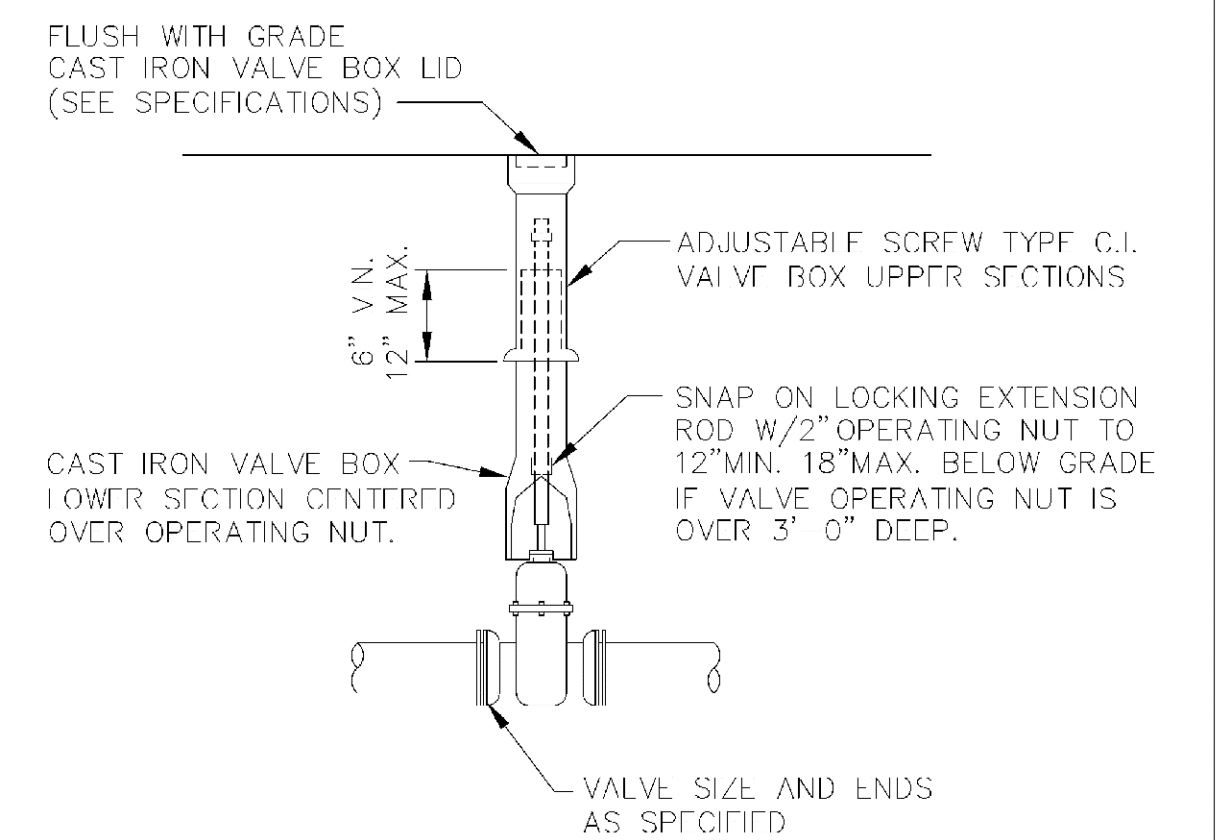
ENGINEERING STANDARDS 2022				
REVISIONS		ENGINEERING DIVISION CITY OF POMPAÑO BEACH	SAMPLE POINT (MAIN)	
BY	DATE			DATE: MAY 2022 DWG. NO. 100-1
S.S.	04-2005			
SCALE: N.T.S.				



ENGINEERING STANDARDS 2022			
REVISIONS		ENGINEERING DIVISION CITY OF POMPAÑO BEACH	SAMPLE POINT (HYDRANT)
BY	DATE		
S.S.	04-2005		
SCALE: N.T.S.			DATE: MAY 2022 DWG. NO. 101-1



ENGINEERING STANDARDS 2022			
REVISIONS		ENGINEERING DIVISION CITY OF POMPAÑO BEACH	VALVE BOX SETTINGS
BY	DATE		
S.S.	04-2005		
SCALE: N.T.S.		DATE: MAY 2022 DWG. NO. 102-1	

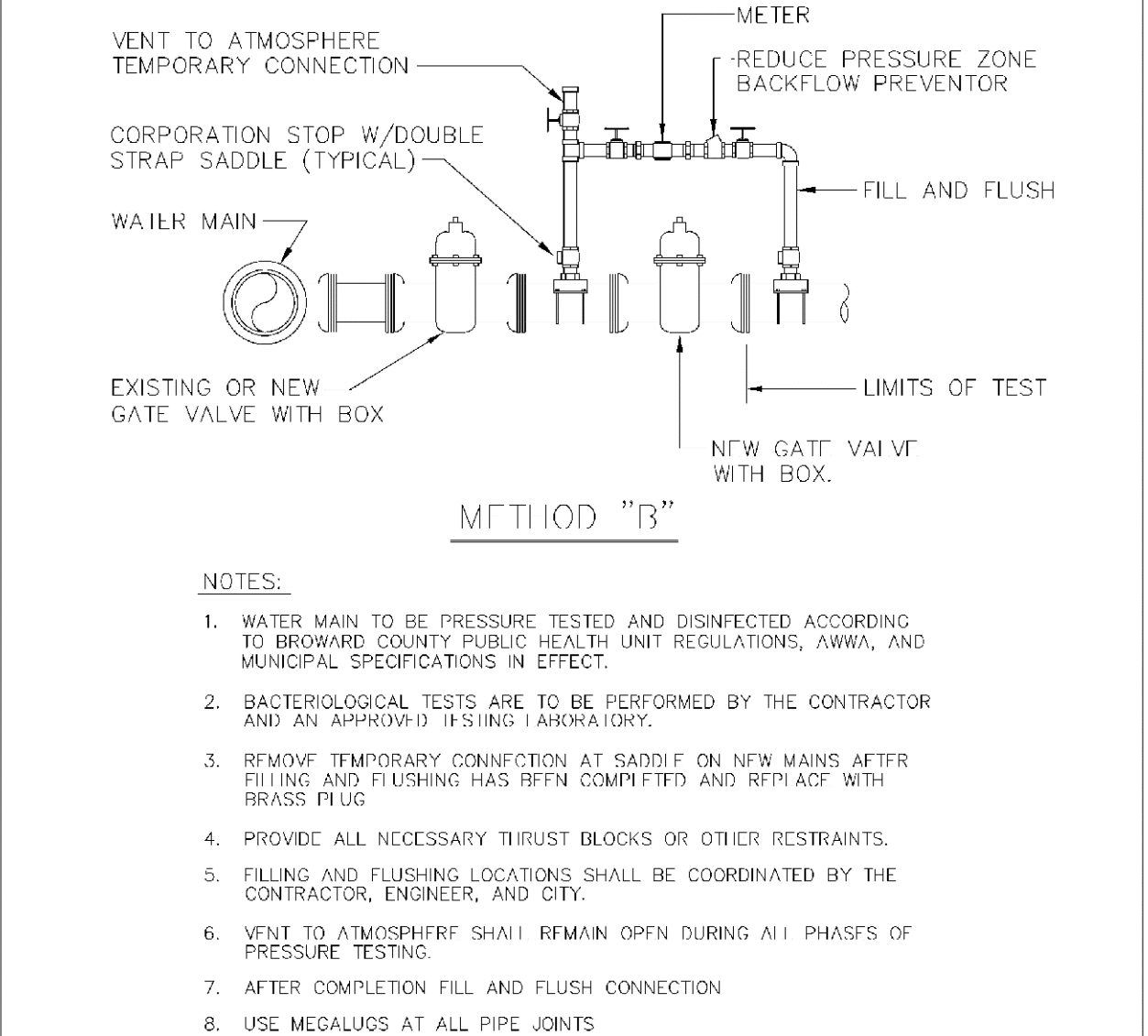


GATE OR PLUG VALVE SETTING

USE MEGALUGS AT ALL PIPE JOINTS

ALL D.I.P. TO BE PAINTED
BLUE ON TOP HALF OF PIPE.

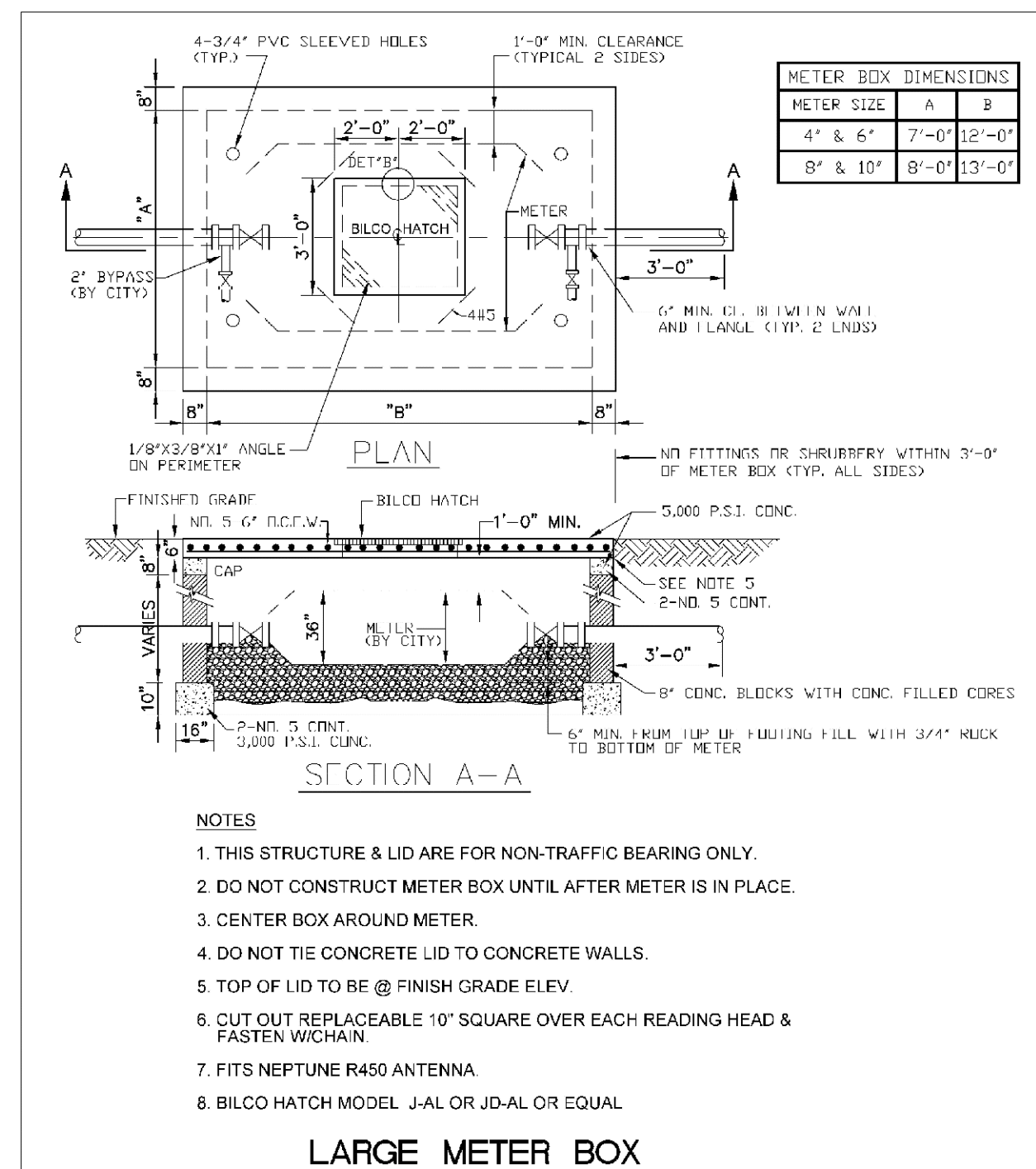
ENGINEERING STANDARDS 2022				
REVISIONS		ENGINEERING DIVISION CITY OF POMPAÑO BEACH	GATE OR PLUG VALVE SETTINGS	
BY	DATE		DATE: MAY 2022 DWG. NO. 103-1	
S.	04-2005			
W.	11-2007			
SCALE: N.T.S.				



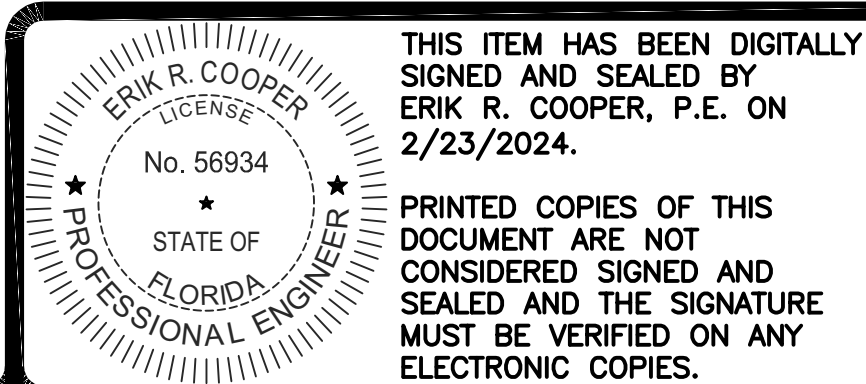
FILLING AND FLUSHING CONNECTION

ALL D.I.P. TO BE PAINTED
BLUE ON TOP HALF OF PIPE.

ENGINEERING STANDARDS 2022				
REVISIONS		ENGINEERING DIVISION CITY OF POMPAÑO BEACH	FILLING / FLUSHING CONNECTION	
BY	DATE			
S.S.	04-2005			
T.W.	11-2007			
S.S.	01-2012			
SCALE: N.T.S.			DATE: MAY 2022 DWG. NO. 104-1	



ENGINEERING STANDARDS 2022				
REVISIONS		ENGINEERING DIVISION CITY OF POMPAÑO BEACH	LARGE METER BOX	
BY	DATE			
T.W.	03-2008			
S.S.	01-2012			
S.S.	11-2012			
SCALE: N.T.S.		DATE: MAY 2022 DWG. NO. 105-1		



THIS ITEM HAS BEEN DIGITALLY
SIGNED AND SEALED BY
ERIK R. COOPER, P.E. ON
2/23/2024.

PRINTED COPIES OF THIS
DOCUMENT ARE NOT
CONSIDERED SIGNED AND
SEALED AND THE SIGNATURE
MUST BE VERIFIED ON ANY
ELECTRONIC COPIES.



CHENEY BROTHERS, POMPAÑO BEACH
SECTION 27, TOWNSHIP 48S, RANGE 42E.
CITY OF POMPAÑO BEACH, FLORIDA
CONCEPTUAL WATER AND
WASTEWATER DETAILS

2001 N. ANDREWS AVE

P22-2000051
04/03/2024